



UNIVERSITÄT
HOHENHEIM



A PRACTICAL
GUIDE FOR
INTERNATIONAL
STUDENTS

Welcome!

Living and Studying

www.uni-hohenheim.de/en/internationals-beginning-of-studies

KEY FACTS ABOUT THE UNIVERSITY OF HOHENHEIM

- founded in **1818**
- **3** faculties
- **37** degree programs
(**11** Bachelor's, **26** Master's)
- **270** cooperation partnerships with universities
and research facilities worldwide
- about **8780** students
- **1345** international students from **110** countries
- **460** international students enroll each year
- **1887**: first international student Teijiro Yamamoto,
Faculty of Agricultural Sciences



WELCOME TO THE UNIVERSITY OF HOHENHEIM!



Starting at a university abroad is a big step, and it comes with plenty of paperwork.

You will probably have lots of questions!

This brochure works as a checklist to help you get organized before and during your initial days at the University of Hohenheim. You will also find tips about daily life and extracurricular activities. Don't miss exploring Stuttgart and our stunning campus – many say it's one of the most beautiful in Europe!

We wish you a great start and successful studies. Make the most of your time at the University of Hohenheim!

Your Office of International Affairs, University of Hohenheim

PODCAST NEWS4INTERNATIONALS



News4Internationals

Welcome to **News4Internationals**. This podcast is made for, and inspired by you! Whether you're navigating this new culture, mastering German, or just trying to find a student group to join, this show is your go-to guide. Each episode, we'll dive into the stories of Hohenheim students from all around the globe, share expert tips on thriving academically and socially, and explore the vibrant, multicultural community that makes our university unique. Let's embark on this journey together on News4Internationals – where your voice matters!



Slide into our DMs or send an email to **internationals@ua.uni-hohenheim.de**. Be our guest, a contributor, or a silent advisor. We want to hear your stories!

GUIDANCE AND SUPPORT



If you need help or advice, there is always someone at the University of Hohenheim to whom you can refer. Please find below a selection of offices and their area of competence – and how to find them.

Rule of thumb:
The best way to reach us is still by email.

OFFICE OF INTERNATIONAL AFFAIRS

| When should you contact them? | Contact Details | Visiting Hours |
|---|--|---|
| Address: Fruwirthstr. 12 70599 Stuttgart | Room 232, 235 Email: outgoing@ua.uni-hohenheim.de | Tue: 10 a.m. – 12 noon Wed: 1 p.m. – 3 p.m. (Zoom) |
| If you would like to do a stay abroad. | | |
| If you come to Hohenheim as an exchange student or free mover. | Room 137 Email: incoming@ua.uni-hohenheim.de | Tue: 10 a.m. – 12 noon Wed: 1 p.m. – 3 p.m. (Zoom) |
| If you come to Hohenheim as a full-time degree student. | Room 138 Email: degreestudents@ua.uni-hohenheim.de | Tue: 10 a.m. – 12 noon |
| After admission in regards to tuition fees. | Room 138 Email: tuitionfees@ua.uni-hohenheim.de | Tue: 10 a.m. – 12 noon |
| Any questions regarding life in Hohenheim, or occurring questions and problems. | Room 137 Email: internationals@ua.uni-hohenheim.de | Tue: 10 a.m. – 12 noon Wed: 1 p.m. – 3 p.m. (Zoom) |

GENERAL ENQUIRY POINTS

| What do they do? | Contact Details | Opening Hours |
|--|---|---|
| Student Information Center (SIZ) Address: Hohenheim Palace 1 West Wing 033/036 70599 Stuttgart | General guidance/counselling for prospective and enrolled students. | siz@verwaltung.uni-hohenheim.de Tue: 10 a.m. – 12 noon Thu: 2 p.m. – 4 p.m. |
| Studiensekretariat Address: Hohenheim Palace 1 West Wing 70599 Stuttgart | General study matters, student ID. | Telephone: +49 711 459 23456 +49 459 22015 studsek@verwaltung.uni-hohenheim.de Hotline June – Oct <i>times announced on website</i> Secretary's Phone Mon – Thu: 10 a.m. – 12 noon |
| Student Counselling Center (ZSB) Address: Emil-Wolff-Str. 14 70599 Stuttgart | Advice on flexible study arrangements, workshops on study techniques, exam coaching and psychological advice (special consultation hours), information materials. | zsb@uni-hohenheim.de +49 711 459 22064 Mon + Thurs 10 a.m. – 12 noon, Tues 2 – 4 p.m. Mon, Thurs: 2 p.m. – 4 p.m. |
| Career Center Address: Emil-Wolff-Str. 14 70599 Stuttgart | Advice for students and graduates with professional orientation, profile building, and applying. | career@uni-hohenheim.de +49 711 459 23598 Tue: 1 a.m. – 2 p.m. Thur: 10 a.m. – 11 a.m. |
| IT-Service-Desk Address: Garbenstr. 30 (Bio 1) 1st Lower Level 70599 Stuttgart | Help and advice with technical problems. | Telephone: +49 711 459 24444 Email: kim-it@uni-hohenheim.de Mon – Thu: 8:30 a.m. – 4 p.m. Fri: 8:30 a.m. – 2 p.m. |
| Psychotherapeutic Counselling | In the event of study-related or personal crises. | see page 34 |

| | |
|---|---|
| KEY FACTS ABOUT THE UNIVERSITY OF HOHENHEIM | 2 |
| WELCOME TO THE UNIVERSITY OF HOHENHEIM! | 4 |
| PODCAST NEWS 4 INTERNATIONALS | 5 |
| GUIDANCE AND SUPPORT | 6 |

PART ONE – BEFORE ARRIVAL

| | |
|---|----|
| 1. PAYMENT OF TUITION AND REGISTRATION FEES | 12 |
| 2. HEALTH INSURANCE | 13 |
| 3. ENROLLMENT | 14 |
| 4. ORGANIZATION | 16 |
| Public Holidays | |
| Official Semester Dates | |
| 5. WELCOME WEEK | 18 |

PART TWO – THE FIRST WEEKS

| | |
|--------------------------------|----|
| 1. MOVING INTO THE DORMITORIES | 22 |
| 2. REGISTER WITH THE CITY | 23 |
| Bürgerbüro | |
| Media Broadcasting Fee | |
| 3. FINANCES | 24 |
| Blocked Account | |
| Opening a German Bank Account | |
| Scholarships | |
| 4. STUDENT ID | 25 |

PART THREE – UNI INFRASTRUCTURE

| | |
|--|----|
| 1. THE OFFICE OF INTERNATIONAL AFFAIRS | 28 |
| 2. STAYS ABROAD DURING YOUR STUDIES | 29 |
| 3. THE LANGUAGE CENTER | 30 |
| 4. STUDENT COUNSELING CENTER | 31 |
| The ZSB | |
| 5. THE CAREER CENTER | 32 |
| 6. BRICKS – BE THE RIGHT FIT | 33 |
| 7. PSYCHOTHERAPEUTIC COUNSELING (PBS) | |
| STUDIERENDENWERK TÜBINGEN-HOHNENHEIM | 34 |
| 8. LIBRARIES AND LIBRARY SERVICES | 36 |
| 9. KIM IT HELP DESK | 37 |
| 10. FOOD AND DRINKS ON CAMPUS | 38 |
| 11. GETTING INVOLVED | 39 |
| AStA groups | |
| Student groups | |
| 12. UNISPORT, ARTS AND SPIRITUALITY | 40 |
| Unisport | |
| Uni Music and Theater | |
| Religion and Spirituality | |

PART FOUR – EVERYDAY LIFE

| | |
|-----------------------------------|----|
| 1. MEDICAL CARE | 48 |
| 2. SHOPPING AND GROCERIES | 49 |
| Clothing | |
| Supermarkets, Drugstores and more | |
| Alternative Supermarkets | |
| Household articles | |
| 3. PHONE AND SIM | 52 |
| 4. PRIVATE HOUSING | 53 |
| 5. FINDING JOBS | 54 |
| 6. PUBLIC TRANSPORT | 55 |
| VVS and Regional Trains | |
| Car-sharing | |
| Bikes on campus | |

PART FIVE – EXPLORE

| | |
|--------------------------------------|----|
| 1. STUTTGART | 60 |
| 2. AROUND STUTTGART | 64 |
| TIPS FOR YOUR STUDIES | 66 |
| OVERVIEW INSTAGRAM & WHATSAPP GROUPS | 67 |





PART ONE – BEFORE ARRIVAL

CHECK OUT
THE FOLLOWING
PAGES →

1. PAYMENT OF TUITION AND REGISTRATION FEES



To register as a student, submit payment confirmation for tuition (if applicable) and registration fees to the Office of International Affairs. Enrollment is only complete once the fees are fully credited to the university's account. The same fees must be paid for re-registration in later semesters.

Fee amounts depend on your student status. Details are in your **admission letter** and the **fee notification** in your HohCampus account.

2. HEALTH INSURANCE



For enrollment, a German statutory health insurance company must electronically send us the confirmation "Meldegrund 10 Uni Hohenheim".

YOU MUST REQUEST "MELDEGRUND 10 UNI HOHENHEIM" EVEN IF

- you already have German statutory health insurance
- you are exempt (e.g. EHIC from the EU, or private German insurance)
- you are over 30 years old

The German health insurance system has both statutory and private options. Statutory insurance is income-based and mandatory for students under 30, costing around €105 monthly. All statutory providers offer similar coverage due to government regulations, with slight differences in additional services. Students over 30, and DAAD scholarship holders can choose private insurance.

Note: Travel insurance is not accepted, and presenting your insurance card is insufficient!

For more information, visit
www.uni-hohenheim.de/en/faq-tuition-fees-international-students
 or contact our colleague at
tuitionfees@ua.uni-hohenheim.de

3. ENROLLMENT



The enrollment process varies by country of origin and student type.

Refer to your official admission letter for detailed information and visit www.uni-hohenheim.de/en/enroll, or contact degreestudents@ua.uni-hohenheim.de for more details.

DEGREE-SEEKING NON-EU STUDENTS AND ALL NON-DEGREE STUDENTS

- enroll at the **Office of International Affairs**
- when in doubt, contact degreestudents@ua.uni-hohenheim.de or incoming@ua.uni-hohenheim.de

DEGREE-SEEKING EU STUDENTS

- enroll at the **Registrar's Office** ("Studiensekretariat")
- when in doubt, contact studsek@verwaltung.uni-hohenheim.de

NEEDED FOR ENROLLMENT

- ✓ copy of your admission letter
- ✓ signed application for enrollment (see application portal)
- ✓ receipt of payment of tuition and registration fees
- ✓ copy of passport or ID card

NON-EU STUDENTS ENTERING WITHOUT A STUDENT VISA (E.G. USA, CANADA, SOUTH KOREA):

- a residence permit is not mandatory for enrollment
- obtain a residence permit from the Foreigners' Office ("Ausländerbehörde") within the first three months of your stay

4. ORGANIZATION

Public Holidays

The following dates represent the public holidays for the state of Baden-Württemberg. These days are usually lecture-free days – offices and grocery stores are closed. However, some other federal states might not have these holidays, or have different ones.



LECTURE-FREE DAYS

| | |
|--|---|
| New Year: 1 st January | Pentecost holidays * |
| Epiphany: 6 th January | Corpus Christi * |
| Easter holidays * | German Unity Day: 3 rd October |
| Labor Day: 1 st May | All Saints' Day: 1 st November |
| Ascension * | Christmas holidays: **25 th + 26 th December |

* The dates of these holidays will change each year. You can look it up here: publicholidays.de/baden-wuerttemberg/

**Many shops and offices close earlier on Dec 24th, although it is not a public holiday.



Official Semester Dates



WINTER SEMESTER

| | |
|--|---------------------------|
| Start of Semester | 1 st October |
| End of Semester | 31 st March |
| Re-Registration Deadline for SoSe | 15 th February |

SUMMER SEMESTER

| | |
|--|----------------------------|
| Start of Semester | 1 st April |
| End of Semester | 30 st September |
| Re-Registration Deadline for WS | 15 th August |

Further semester dates (e.g. when the lecture period begins and ends) can be found at www.uni-hohenheim.de/en/semester-dates.

5. WELCOME WEEK



Start your studies well-prepared and with new friends!

The Office of International Affairs offers various presentations, workshops, and events on study organization and orientation on campus at the start of the semester. Take the opportunity to get to know your fellow students and find out about studying in Hohenheim, residence permits, and much more. The Welcome Week is designed for international students who are pursuing full-time studies (degree seekers), a semester abroad (exchange students), or a self-organized semester stay (free movers) at the University of Hohenheim.

The full program is published at
www.uni-hohenheim.de/en/orientation-days



CHECK OUT
THE FOLLOWING
PAGES →

PART TWO – THE FIRST WEEKS

The first weeks can be overwhelming. Don't hesitate to get in touch with us! And make sure to join as many Welcome Week events as possible for a smooth start with friends.

1. MOVING INTO THE DORMITORIES



When you move into a hall of residence, you will get information from the dormitory administration after paying the deposit and first month's rent. The halls are managed by the Studierendenwerk Tübingen-Hohenheim, not by the university.

- Pay attention to move-in times and whether you need an **appointment** to get your keys. | My appointment is _____
- The caretaker gives you the keys and the **landlord confirmation** ("Wohnungsgeber-bestätigung")
- Have your passport ready when you move in.
- You must pick up your room key yourself unless you authorize someone else.
- You cannot move in during weekends unless agreed upon with the caretaker in advance.

You can live in the halls of residence at the University of Hohenheim for up to 2 years (depending on your study program). Extensions are not possible.

In Germany, a SEPA Direct Debit Mandate authorizes automatic and secure payments from your bank account. It's an easy way to keep up with recurring payments.

Upon moving in, you will sign the mandate, and your rent will be deducted automatically each month. EU students may use their home accounts if their banks support SEPA Direct Debit.

**FOR CAMPUS HOUSING QUESTIONS,
CONTACT THE DORMITORY ADMINISTRATION:**

ADDRESS

Kirchnerstrasse 5, 70599 Stuttgart
info.hoh@sw-tuebingen-hohenheim.de
 + 49 711 459-22781 |-22981 |-23188

OPENING HOURS

Tue: 1:00 pm – 3:00 pm
 Wed, Thu: 10:00 am – 12:00 pm



2. REGISTER WITH THE CITY



Bürgerbüro

You must register as a new citizen at the Bürgerbüro (engl. Citizens' Registration Office) **within two weeks** of arrival to get a **registration certificate** ("Meldebescheinigung").

YOU WILL NEED:

- ✓ Completed and **signed registration form** (available at the Bürgerbüro)
- ✓ National identity card (EU citizens) or **passport** (non-EU citizens)
- ✓ **Landlord confirmation** (from your caretaker or landlord)
- ✓ **Rental contract** (recommended)

ADDRESS

Bürgerbüro Plieningen-Birkach

Filderhauptstraße 155, 70599 Stuttgart, **buergerbueros@stuttgart.de**

OPENING HOURS

Mon, Wed, Fri: 8:30 a.m. – 1:00 p.m.
 Tue: 8:30 a.m. – 12:00 (noon), 2:00 p.m. – 4:00 p.m.
 Thur: 8:30 a.m. – 12:00 (noon), 2:00 p.m. – 6:00 p.m.

Media Broadcasting Fee

After registering at the Bürgerbüro, you will receive a letter about monthly fees from the German broadcasting system. These Rundfunk fees support independent public media, while private media is financed by advertisement.

Note: You cannot avoid this contribution. If you live in a shared flat, talk to your flatmates. Someone might already be paying, and you only need to pay a share.

More information is available at
www.rundfunkbeitrag.de/welcome/englisch/index_ger.html

3. FINANCES



Blocked Account

If you are a non-EU citizen with a blocked account, you must activate it to access your money. The providers will send you all necessary information. Activation is usually done online. Our students often use Fintiba and expatrio but there are more providers to choose from.

Opening a German Bank Account

Most students need a German bank account for paying rent, receiving scholarships and more. EU students might use their home account if it supports SEPA Direct Debit. Banks may refuse accounts for stays under three months. If you have issues, contact us. Due to high demand at the start of the winter semester, make an appointment in advance.

CHECKLIST FOR OPENING A BANK ACCOUNT:

- ✓ **Registration form** from the Bürgerbüro
- ✓ **Passport** or national ID card
- ✓ **Letter of Admission**
- ✓ **Tax ID*** (sent by mail within 6 weeks after registration)

*You can open the account without the tax ID but must submit it within two months to avoid your account getting blocked. If lost, request a new tax ID at www.bzst.de (Bundeszentralamt für Steuern).

Note: Use your private email address to open a bank account in case the bank need to contact you after your Hohenheim email address has expired.

Scholarships

There are several scholarships available to Hohenheim students, especially for particularly committed students, either academically or socially. Some scholarships are tied to your study program, or faculty. You can find out more here:

www.uni-hohenheim.de/en/awards-and-scholarships.

Be aware that you might need to apply well in advance to receive a scholarship.

4. STUDENT ID



It can take up to two weeks to receive your student ID card after completing enrollment. Cards are mailed to your German address entered in HohCampus. If there is no German address or delivery is not possible, you will receive email instructions from the SIZ ("Studieninformationszentrum").

CHECKLIST

- ✓ Ensure a German address is entered in HohCampus
- ✓ Reactivate your card each semester after fee payment. Validation machines are located in Mensa and the central library.

STUDENT ID FEATURES

- pay at Mensa and cafeteria
- pay for copies, prints and scans
- wash laundry in the dormitories
- open and lock lockers
- use as library card

Visual learner?

Visit [@news4internationals_hohenheim](https://www.instagram.com/news4internationals_hohenheim) on Instagram – we have all the essentials for you!



CHECK OUT
THE FOLLOWING
PAGES →

PART THREE – UNI INFRA- STRUCTURE

1. THE OFFICE OF INTERNATIONAL AFFAIRS



The Office of International Affairs is a crucial point of contact for international students, offering guidance on admission, scholarships and exchange programs. It supports both incoming and outgoing students with international study opportunities, and provides advice on studying abroad. The office also assists international researchers and fosters global research collaborations. Its Welcome Center aids scholars at risk in resuming their studies and scientific work.

Additionally, the Office of International Affairs plays a key role in maintaining international partnerships and networks.

aaa@ua.uni-hohenheim.de | +49 (0)711 459 23 972 | Fruwirthstr. 12, 70599 Stuttgart

For more information and team contacts, see
www.uni-hohenheim.de/en/office-of-international-affairs

2. STAYS ABROAD DURING YOUR STUDIES



WHAT THEY DO:

- exchange and state programs for a semester/year abroad
- semester/year abroad as a free mover
- internships abroad
- research stay abroad

OPEN OFFICE HOURS:

Tue: 10 – 12 in R. 232

Wed: 1 – 3 via Zoom: 829 1833 1961 | ASe1v1

E-Mail: outgoing@ua.uni-hohenheim.de

Website: www.uni-hohenheim.de/en/stays-abroad

Info events: www.uni-hohenheim.de/en/group-advisory-session-for-stays-abroad

International Day: www.uni-hohenheim.de/en/international-day

APPLICATION DEADLINES

| REGION | EXCHANGE PROGRAM | NEXT DEADLINE |
|--|--|---------------|
| USA, Canada, Israel | overseas exchange programs, state programs Baden-Württemberg | 10 November |
| South America, Africa, New Zealand, Asia, Mexico | overseas exchange programs | 10 January |
| Europa | Erasmus+-Program, Swiss European Mobility Program (SEMP) | 15 February |



Check out our Podcast episode: **Global U: Exploring Study Abroad Options**



3. THE LANGUAGE CENTER



The Language Center at the University of Hohenheim offers students and staff the opportunity to acquire recognized additional qualifications in ten languages. The offer includes workshops and language examinations such as UNlcert® and TestDaF. The majority of the program takes place during the semester, and is supplemented by course projects.

The Language Center offers additional courses during the lecture-free periods, such as the "German Intensive Course" or "Academic English for Masters Students". the latter is included in the Welcome Week at the beginning of each new winter semester. We highly recommend taking language courses, especially in German! All courses, course fees, important dates and how to register can be found here:
www.uni-hohenheim.de/en/language-center



Want to know what the intensive courses are all about?

4. STUDENT COUNSELING CENTER



The ZSB

WHAT THEY DO:

- Advise and support before, during and after your studies
- Large workshop and seminar offer to help you organize your studies
- Counseling in case of (imminent) loss of the right to examination
- Counseling in case of crises during your studies (e.g. learning difficulties, exam anxiety, motivational crises, health problems)

Tip: You can always request a personal appointment.

More information is available at:

www.uni-hohenheim.de/en/zsb-contact



5. THE CAREER CENTER



THE CAREER CENTER

WHAT THEY DO:

- Advise and help students and graduates with professional orientation,
- Profile building, and application skills
- Teach key qualifications and skills
- Provide assistance for career entry
- Individual advising

This service is free of charge.

Tip: You can also request an individual consultation appointment.

More information is available at [@careercenter_unihohenheim](https://www.uni-hohenheim.de/en/cch) or www.uni-hohenheim.de/en/cch



6. BRICKS – BE THE RIGHT FIT



The BRICKS project, part of the DAAD's FIT initiative, supports international students throughout their academic journey with tailored services.

BRICKS is based on the belief that success in Germany depends on four building blocks: Inclusion, Language, Career Skills and Networking. It aims to ease the start of your studies in, enhance academic success, develop German language proficiency, and improve your employability in Germany. By fostering strong networks between academia and industry, BRICKS ensures a smooth transition from education to professional career. This comprehensive support system is designed to lead international students to success in both their studies and future careers in Germany.

The project is cross-departmental, and the offers are coordinated. For questions about Welcome Week and additional preparatory offers, contact internationals@ua.uni-hohenheim.de. For language courses, please contact spraz@uni-hohenheim.de. For career-related offers, contact career@uni-hohenheim.de.

7. PSYCHOTHERAPEUTIC COUNSELING (PBS) STUDIERENDENWERK TÜBINGEN-HOHENHEIM



WHAT THEY DO:

- help and consult you in a personal crisis, depression, declining mental health, non-study-related issues
- support you with pre-existing conditions
- help and consult with study-related issues or anxiety
- can help you in the prevention of mental illness

The service of the PBS is free of charge.

OPEN CONSULTATION HOURS:

Tue: 12.30 p.m. – 3 p.m.

Friedrichstraße 21, 72072 Tübingen

and

Kirchnerstraße 5, 70599 Stuttgart

Online appointment: www.terminland.de/pbs-hohenheim/

In acute emergencies or serious psychological crises and suicide risk please contact or visit:

Furtbachklinik

Klinik für Psychiatrie und Psychotherapie

Furtbachstraße 6–8b

70178 Stuttgart

For further help and information check those websites:

www.my-stuwe.de/en/advice/psychotherapeutic-counselling/

www.telefonseelsorge.de/international-helplines/

faq.whatsapp.com/1417269125743673/?helpref=uf_share

@hohenheim.nightline

@my_stuwe



8. LIBRARIES AND LIBRARY SERVICES



Central Library Garbenstr.15

Mon – Fri: 8 a.m. – 9 p.m.
Sat – Sun: 10 a.m. – 9 p.m.

kim-bib@uni-hohenheim.de
+49 (0)711 459 22 096

Departmental Library Palace, East Wing

Mon, – Fri: 8 a.m. – 9 p.m.
Sat – Sun: 10 a.m. – 9 p.m.

kim-bib@uni-hohenheim.de
+49 (0)711 459 22 096

Keep in mind that the libraries are closed on public holidays!

Tip: Students from the Hohenheim and Stuttgart region can borrow media overnight or over the weekend. For further information, ask the library staff.

LIBRARY ACCESS

Your student ID card can serve as a library card. On the back you will find the library card number, consisting of your matriculation number and the prefix 910 (e.g. 910 123456).

Use **rds-hoh.ibs-bw.de/hohsearch/** to search for article, recent literature, numerous bibliographic subject databases (e.g. Scopus, CAB Abstracts)

Books and copies can be ordered from other libraries by inter-library loan service. For more detailed information on all library issues, contact the library staff at the information counters or visit the website:

kim.uni-hohenheim.de/en/student-homepage

Tip: During Welcome Week, the Office of International Affairs organizes English library tours for you! Check here when tours are offered:
www.uni-hohenheim.de/en/your-start-in-hohenheim

9. KIM IT HELP DESK



Problems with internet access on campus? Forgot your password to your Uni Hohenheim account? Laptop crashed? You want to have a presentation poster or your Master's thesis printed? The KIM help desk has an open ear for your problems and enquiries.

ADDRESS

Garbenstr. 30 | Bio 1 | 1. UG
+ 49 (0)711/459-24444
kim-it@uni-hohenheim.de

OPENING HOURS

Mon – Thur: 8:30 a.m. – 4 p.m.
and
Fri: 8:30 a.m. – 2 p.m.



10. FOOD AND DRINKS ON CAMPUS



OFFERS BY STUDIERENDENWERK MENSA

Mon to Fri: 11 a.m.–2 p.m.

Cafeteria during semester

Mon to Thurs: 7:30 a.m.–5 p.m.
Fri: 7:30 a.m.–3 p.m.

Cafeteria during semester break

Mon to Fri: 7:30 a.m.–3 p.m.



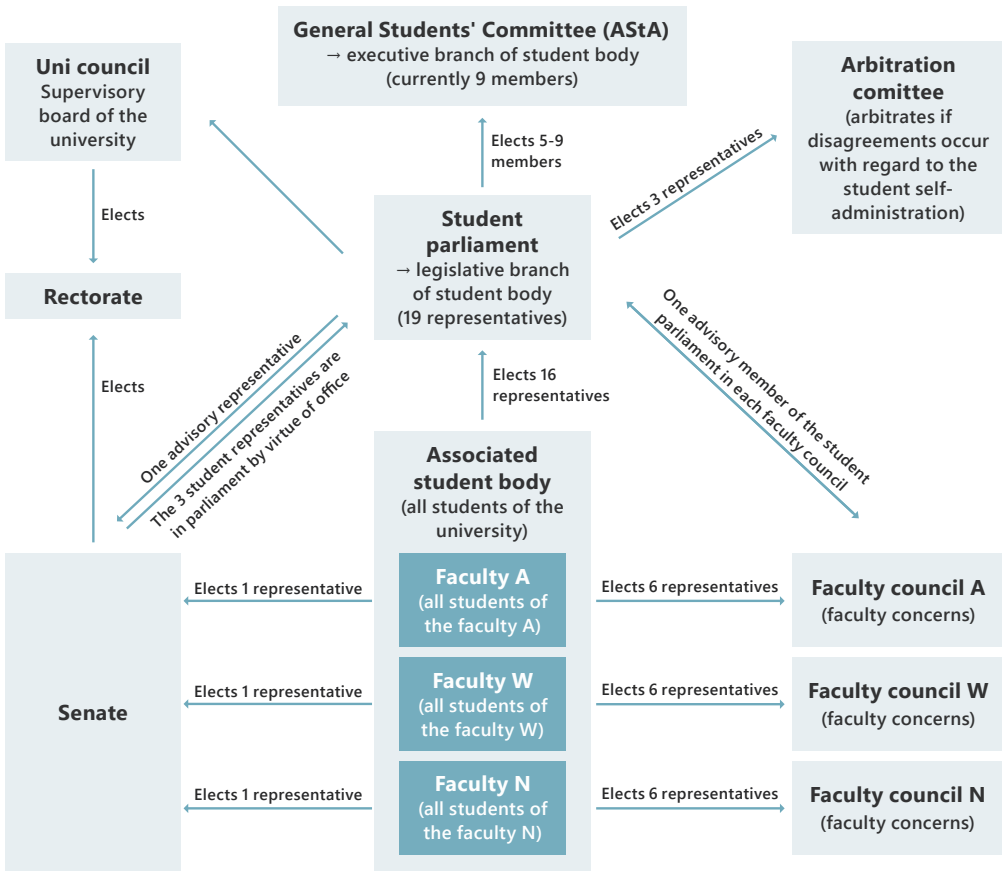
Cafete

Cafete is a student-run cafe with fair trade coffee and fair prices. They are open during the semester and can be found in TMS. Follow their Instagram account [@cafete_unihohenheim](#) for their opening hours! Cafete welcomes everyone, especially volunteers.

11. GETTING INVOLVED



General Students Committee (AStA) - From Students to Students



For further explanations, see vs.uni-hohenheim.de/

The AStA consists of 9 members, and is elected by the Student Parliament, which itself is elected by all students of the university. At the AStA office you will get support in all student matters, to exercise your rights or to get active yourself. Their staff can also help you organize things, especially

- renting TMS
- room application for student groups
- requesting a refund for your contribution
- using their barbecue
- emergency housing

Find out more about the AStA at: vs.uni-hohenheim.de/en/asta

By the way: The uni merch shop is located in Fruwirthstraße 24 right next to the InnoGreenHouse. You can find a variety of merch articles of the University here as well as lecture notes and supplementary material corresponding to current lectures at the university. Check @vs_hohenheim for opening times and further information.

AStA groups

A. KULTURGRUPPE

- interdisciplinary student group
- enrich the cultural life in Hohenheim
- create a platform for art, music and fun

@kulturgruppe_hohenheim

B. INNOGREENHOUSE

Ideate. Build. Test. Learn. Grow.

- turn ideas into reality with passionate fellow students
- learn from failure & unleash entrepreneurial capacities
- interdisciplinary teams & work collaboratively
- shape the future & tackle global challenges

@innogreenhouse_hohenheim

Check out our Podcast episode: [Entrepreneurship@UHOH](#)



Student groups

A full list of student groups of Hohenheim is available at:
vs.uni-hohenheim.de/en/117070

Here are some groups in which many international students participate.

ISO E.V.

- International Students Organisation
- get to know Germany and its people
- get in touch with other students
- tours and social activities
- Buddy program: [@iso.hohenheim](https://iso.uni-hohenheim.de/en/registrationinternationals)

AKN

- Sustainability Task Force
- concerned with sustainability
- facilitate communication, promote exchange and enable targeted work
- everyone is welcome

@aknunihoenheim

akn@uni-hohenheim.de

BEEHIVE

- Bioeconomy Dialogue
- bioeconomy related research, news, talks and careers
- build and strengthen Bioeconomy at Hohenheim
- facilitate information sharing

@beehivebioeconomyhoenheim

GREENING

- green the campus
- reinforcing sustainability at Hohenheim
- improve resource management
- environmentally friendly solutions

@greeninghoenheim

greening.uni-hohenheim.de/en/79332

FRESH

- stimulate dialogue about the future of food
 - impact on the landscape, livelihoods and culture
- @fresh_hohenheim



CAFETE

- volunteer students offer organic and fairtrade coffee & tea
- alternative to the Cafeteria
- proceeds are donated to charity projects around the world
- a place to study and get to know each other

@cafete_unihohenheim

HOHENHEIMER QUEERS

- set a safe space and visibility for everyone at our university
- campaign for queer rights
- educate people about the LGBTQIA+ community, sexual orientations, gender identities
- organize events like trips, board game parties and more
- everyone is welcome

@hohenheimer_queers

Active members are always welcome!

Check out our podcast episodes:

Introducing Student Groups of Hohenheim



Many events and parties take place in TMS or student dormitories organized by student groups or Fachschaften. Loud music is not allowed between 10 p.m. and 6 a.m. in the dormitories. Please be responsible and respectful to each other, accept each other's boundaries and always ask for consent first.

12. UNISPORT, ARTS AND SPIRITUALITY



Tip: You can also register for sports activities if you do not yet have a student ID or enrollment number yet. Send an email to www.uni-hohenheim.de/en/university-sports.

Unisport

WHAT THEY OFFER:

- on-campus sports center with gym, outdoor running track, football pitch, tennis courts, beach volleyball field
- many sports courses are offered during and off semester (Yoga, Zumba, Fitness, Football etc.)
- some courses charge a small participation fee
- the university the SEPA debit-scheme as a method of payment
- sports programm is renewed each semester period:

www.uni-hohenheim.de/en/university-sports

@unisport_hohenheim

WHAT? WHEN? WHERE?

Tel: +49 711 459-22052

Email: unisport@uni-hohenheim.de

Address: Kirchnerstr. 5 (Alte Botanik), room 113 on 1st floor

Instagram account: @unisport_hohenheim



Uni Music and Theater

There are several ensembles (e.g. choirs, orchestras, bands) in Hohenheim. You can find all styles from pop to jazz and classical music. Each ensemble gives a final concert each semester in which they present the program they have rehearsed during the semester. If you play an instrument or want to sing in a choir, have a look at www.uni-hohenheim.de/en/uni-music and/or follow these accounts:

@chor.unihohenheim
 @sinfonieorchester
 @concert_band_
 @unimusik_theater_uni_hohenheim

CONTACT:

Tel: 0711 459-24072

Email: unimusik@uni-hohenheim.de

Building: Euroforum, room 104

Religion and Spirituality

The "Raum der Stille" (Engl. "room of silence") is open to everybody! Here you can practice your belief, pray, meditate or sit in silence.

ADDRESS

Otto-Sander-Str. 5,
 70599 Stuttgart

OPENING HOURS

Mon – Fri: 8:00 a.m. – 9 p.m.

There are many religious communities on campus, just ask you fellow students!

You can find an overview of all types of different religious and spiritual places of worship in Stuttgart at:

en.welcome.stuttgart.de/life/religion-and-beliefs.php



CHECK OUT
THE FOLLOWING
PAGES →

PART FOUR – EVERYDAY LIFE

1. MEDICAL CARE



In case of emergency call from any phone:



In Germany, you visit the **Hausarzt/Hausärztin** (Engl. general practitioner) for regular illnesses and if you need sick leave. They will arrange for a referral to a specialist if necessary. Your health insurance pays for your visits, unless you want additional treatment that is not covered by your insurance. In that case, you need to pay yourself.

For minor problems, like a headache or a sore throat, you can go to any pharmacy for advice and non-prescriptive medication.

If you have an injury or illness, outside of regular practice hours, that requires urgent treatment, you can visit a hospital. Be prepared to wait. Treatment depends on the severity of your condition, not the time of arrival.

Krankenkassenkarte (Engl. health insurance card)

Your health insurance covers doctor visits. Make sure to bring your health insurance card with you every time you go to the doctor. Prescriptions will digitally be transferred onto it. You can directly go to any pharmacy and buy the prescription.

Medical on Call Service: www.116117.de/de/englisch.php

Tip: You can look up doctors via www.arztsuche-bw.de/ and also filter for a doctor offering treatment in English or your native language.

1. Press the button: "zur erweiterten Suche" (in English "advanced search")
2. Select the medical expertise (e.g. "Hausarzt" for general practitioner)
3. Choose language

2. SHOPPING AND GROCERIES



Clothing

Need new things? Visit Königstraße, or the shopping malls "Milaneo" and "Das Gerber". All are within walking distance to the main station Stuttgart.

ALTERNATIVES:

Øbscür Second-hand

Hirschstr. 24, 70173 Stuttgart
@obscurer_secondhandshop

2. Dreams

Tübinger Str. 70, 70178 Stuttgart
seconddreams-stuttgart.de/

Vinted and Kleinanzeigen

Commonly used apps for second hand clothing and household items.

Supermarkets, Drugstores and more

Shops, including supermarkets, drug stores and DIY stores are open Mon – Sat, and always closed on Sundays.

| | REGION | ADDRESS | OPENING HOURS/DIRECTIONS |
|-------------|-----------------|---|---|
| DISCOUNTER | Aldi Süd | Galileistraße 7 70565 Stuttgart | Mon–Sat 7 a.m.–10 p.m. U12 to “Dürrelewang” |
| | Lidl | Vaihinger Str. 115 70567 Stuttgart | Mon–Sat 7 a.m.–9 p.m. U3 to “Vaihinger Str.” |
| | NETTO | Filderhauptstraße 47 70599 Stuttgart | Mon–Sat 7 a.m.–9 p.m. bus to “Plieningen Post” |
| | PENNY | Birkheckenstraße 4 70599 Stuttgart | Mon–Sat 7:30 a.m.–10 p.m. bus to “Birkheckenstrasse” |
| SUPERMARKET | Edeka | Wollgrasweg 23 70599 Stuttgart | Mon–Sat 8 a.m.–8 p.m. at U-Bahn stop “Plieningen” |
| | Kaufland | Rembrandtstraße 47 70567 Stuttgart | Mon–Sat 7 a.m.–10 p.m. U3 to “Möhringen Bahnhof” |
| | REWE | Vaihinger Str. 49 70567 Stuttgart | Mon–Sat 7 a.m.–10 p.m. U3 to “Möhringen Bahnhof” |
| DRUG STORES | dm | Epplerstraße 6 70597 Stuttgart | Mon–Sat 8 a.m.–8 p.m. Bus to “Degerloch ZOB” |
| | Müller | Europaplatz 20 70565 Stuttgart | Mon–Sat 9 a.m.–8 p.m. U3 to “Vaihingen Bahnhof” then U6 to “Europaplatz” |
| | Rossmann | Volmarstr, Friedensstraße 16-18 70794 Filderstadt | Mon–Sat 8 a.m.–8 p.m. Bus 76 to “Bernhausen Hauptstraße” |

Tip: There are two types of supermarkets: discount stores, which are usually a little cheaper but have a smaller range in items, and regular supermarkets, which have a wider range of products but can also be more expensive.

Alternative Supermarkets

| REGION | ADDRESS | OPENING HOURS/DIRECTIONS |
|------------------------------|---|--|
| South Asian | Indian Store Hauptstr. 19 70563 Stuttgart | Mon–Fri 9 a.m.–7 p.m. Sat 9 a.m.–4 p.m. indianstorestuttgart.com/en/contact-us |
| | Kumar Feinkost Rötestrasse 52 70197 Stuttgart | Mon–Sat 10 a.m.–7 p.m. Tel.: 0711 62767930 |
| South-East Asian | BETA Asia Supermarkt Hedelfinger Str. 55 70327 Stuttgart- Wangen | Mon–Sat 9.30 a.m.–7 p.m. Tel.: 0711-22012-734 Email: info@beta-asia-supermarkt.de www.beta-asia-supermarkt.de/ |
| African | African Food Moko Staffelstr. 5 70190 Stuttgart | Mon–Sat 10 a.m.–8 p.m. Tel.: 0711 62767930 www.facebook.com/African-Foods-Moko-245240165576344/ |
| Eastern Europe | Kliver Adalbert-Stifter-Straße 100 70437 Stuttgart | Mon–Fri 9 a.m.–7 p.m. Sat 8 a.m.–6 p.m. Bus to Ruhbank Fernsehturm then U7 to station “Himmelsleiter” |
| Alnatura & teegut | Epplerstraße 12 70597 Stuttgart | Mon–Fri 8 a.m.–8 p.m. directions: bus to “Degerloch ZOB” |

Household articles

| ADDRESS | HOW TO GET THERE |
|--|--|
| BAUHAUS Industriestrasse 57 Stuttgart-Möhringen | U3 to “Vaihingen”, stop “Wallgraben” |
| IKEA Hanns-Martin-Schleyer- Strasse 2 71063 Sindelfingen | Take U3 to “Vaihingen”, then change to S1 (direction “Herrenberg”), get off at “Böblingen Goldberg” and take the Bus 708 direction to “Sindelfingen Eichholz” and get off at stop “Sind. Gottlieb-Daimler-Schule”. Bus 704 from Böblingen “Maich. Landhaussiedlung”. |

3. PHONE AND SIM



All major cell phone providers have stores in downtown Stuttgart. It's a good idea to ask your fellow students for help, and usually, you can make free calls within the same provider. Some providers offer 2-year contracts including a smartphone.

To use your own phone, it is important that your phone is free locked so that it will accept SIM cards from any operator.

In Germany you have two different ways to get a SIM card for your phone:

BUY A CONTRACT

Pros:

- Wide range of tariffs and additional options available
- some contracts include a smartphone
- All-net flat rates with flat-rate basic fees
- if you stay for 1 or 2 years

Cons:

- minimum contract period
- if the tariff services are not used, the full price is still due
- less flexible

X

PREPAID CARD

Pros:

- no basic fee
- cost control
- flexible
- purchase of credit possible in many supermarkets
- if you stay a few months

Cons:

- SIM card may be blocked if not used for a longer time
- advanced planning required

X

NEARBY SUPPLIERS:

- Netto www.nettokom.de
- Aldi www.alditalk.de/basis-prepaid-tarif-sim-karte
- LIDL www.lidl.de/de/tarifvergleich/s7373637

Tip: Every supplier has different tariffs and options. Sometimes you will get a starter credit by buying a card.

4. PRIVATE HOUSING



Living off-campus might suit you if you're bringing family, applied too late for dormitory rooms, exceeded your stay limit there, or simply prefer independence. Finding private housing in Germany can be challenging due to accommodation shortages, high rents, and landlords preferring to negotiate in German.

But don't worry! There is always someone who knows someone!

In addition, the Office of International Affairs has a small team ready to help you find off-campus housing. An online tutorial covers the basics of securing a place to live. Use the provided materials to improve your CV and letter of intent, and have them reviewed by the team. You can also send in room offers and contracts to check for any flaws or scams.

HOUSING MENTORING TEAM

internationals@ua.uni-hohenheim.de

- subject "Housing [your name]"

USEFUL LINKS

- uni-hohenheim.de/en/accommodation-portal
- uni-hohenheim.de/en/housing-at-university-of-hohenheim-for-international-students
- ilias.uni-hohenheim.de

5. FINDING JOBS



Most of our students work, but finding a job without German skills can be challenging at first. Don't worry – connect with other students and always check the blackboards on campus. Additionally, check the job listings on uni-hohenheim.de/en/job-openings and uni-hohenheim.de/en/career-internship-job.

WORK REGULATIONS FOR INTERNATIONAL STUDENTS

- as a **non-EU student**, you are allowed to work 120 full days or 240 half days per year
 - check your visa if you have permission to work!
 - you can engage in student jobs without limitation
- **EU students** are treated like German students and have lots of freedom

Tip: Unlock your future in Germany with a comprehensive program designed just for international students at the University of Hohenheim!

BRICKS offers German classes to boost your communication skills, coaching to help you navigate international spaces, and soft skill workshops to enhance your professional growth. The CV check and interview training sessions will prepare you to shine in any job application process. You will get exclusive access to company contact fairs, connecting you directly with top employers. Start building your career in Germany with BRICKS. See Page 33!

6. PUBLIC TRANSPORT



VVS and Regional Trains

Until further notice, you can use public transport in the VVS network in and around Stuttgart free of charge on weekdays from 6 p.m. to 6 a.m., and all day and night on Saturdays, Sundays and public holidays **with a valid student ID**.

OTHER OPTIONS: VVS STUDI TICKET

- valid all day & night in the VVS tariff zone
- costs 210 € for 6 months
- valid in public transport & regional trains
- ideal for daily use if you live off-campus

en.vvs.de/tickets/studiticket

DEUTSCHLAND TICKET JUGEND BW

- valid for one year all day & night throughout Germany
- costs 365 € per year (changes may apply!)
- valid in public transport & regional trains throughout Germany
- designed for students under 27 who live in Baden-Württemberg
- ideal for younger students who stay at least a year

www.vvs.de/d-ticket-jugendbw

DEUTSCHLAND TICKET

- valid all day & night throughout Germany
- costs 49 € per month as a monthly subscription (changes may apply!)
- valid in public transport & regional trains
- ideal for short- and long-term students who wish to travel throughout Germany

int.bahn.de/en/offers/regional/deutschland-ticket

BADEN-WÜRTTEMBERG TICKET

- valid for one day throughout Baden-Württemberg
- costs 26,50 € for one person+ 8 € for each additional person (max. 5!) (changes may apply)
- valid in public transport & regional trains
- ideal for day trips

int.bahn.de/en/buchung/katalog/REGIONALEANGEBOTE/BWTBWTL000010201

These tickets are not valid for long-distance trains such as ICE, IC and EC. You will be charged a penalty fee.

Tip: Download the “DB Navigator App” / “VVS Mobil” of Deutsche Bahn or the local public transport association VVS. You can book your tickets, search for connections and check if a train is delayed.

Tip: Night buses back to the university are available every night. Check int.bahn.de/en, @deutschebahn or @vvs_stuttgart for more information.

Car-sharing

SOME EXAMPLES OF CAR-SHARING APPS

- SHARENOW
- stadtmobil
- MILES

There is a website for Carpooling, especially for Hohenheim: www.stuttgart-faehrt-mit.de/en/uni-hohenheim.



Bikes on campus

If you have your own bike and it needs to be fixed, you can go to the “Radskeller Hohenheim”. They also offer reasonably priced bikes, and bikes for rent.

OPENING HOURS

Tue and Thu: 3 p.m.–5 p.m.

ADDRESS

Ottilie-Zeller-Weg 8, 70599 Stuttgart

FACEBOOK:

“Hohenheimer Radskeller”

Mobility Station for bicycles and pedelecs

Services at the mobility station include a bicycle garage, lockers with battery charging option as well as a pump and repair station.

www.uni-hohenheim.de/mobilitaet-mobistation

By the way: There are docking stations for “RegioRadStuttgart” bicycles at the mensa, the palace and at the “Plieningen Garbe” bus stop. You can use these bikes and return them at any other docking station.



PART FIVE – EXPLORE

CHECK OUT
THE FOLLOWING
PAGES



1. STUTTGART



Schlossplatz

Life meets history! Located in the heart of Stuttgart, the Stuttgarter Schlossplatz is a very lively and beautiful square. Various cafes invite you to enjoy life throughout the year. In the summer, the square is home to open-air concerts and fairs while in winter you can stroll through Stuttgart's Christmas market.

Stuttgart has 23 districts. There are many parks and green areas, a great cultural scene, iconic city districts with a bustling club scene, vineyards in the heart of the city, mineral baths for relaxation, and much more – in short: the city is all about a high quality of life.

DIVERSE CULTURES AND IDENTITIES

- Stuttgart has around 635.000 inhabitants
- people from 185 nations live here
- almost half of Stuttgart's population has one or more non-German cultural backgrounds., making Stuttgart one of the most diverse cities in Germany

Check out our Podcast episode:

Spreading Love, Not Hate: Queer in Hohenheim



Schlossgarten

The Schlossgarten is one of Stuttgart's most popular green areas and starts just behind the Schlossplatz.



TV-Tower / Fernsehturm

With its impressive height of 217 meters, it is the original model for TV towers all over the world. When the weather is clear, you can see the Swabian Alb – a mountain range in the state of Baden-Württemberg.

fernsehturm-stuttgart.de

Höhenpark Killesberg

With its observation tower, lakes, terraces, its magnificent flower beds, animal enclosures, a large playground and many events it is one of Stuttgart's most popular destinations. The Höhenpark is open all year round.

stuttgart-tourist.de/a-hoehenpark-killesberg



Stuttgart's Events and Activities

Find inspiration and information here:

[@stuttgart.meine.stadt](#)

[@stuttgarttourismus](#)

[@kesselgeschichten](#)

[@stuttgart.places](#)

[@stuttgartpride](#)

[rausgegangen.de/blog/festivals-stuttgart/](#)

[veranstaltung-baden-wuerttemberg.de/](#)

Public Indoor and Outdoor Pools

We would not necessarily recommend swimming in the river Neckar, but Stuttgart offers a good range of public pools instead:

[stuttgarterbaeder.de/fbrosental](#)

[stuttgarterbaeder.de/fbmoehringen](#)

[stuttgarterbaeder.de/hbsonnenberg](#)

[stuttgarterbaeder.de/leuze](#)

[stuttgarterbaeder.de/solebadcannstatt](#)

[www.fildorado.de/](#)

[www.schwabenquellen.online/](#) – caution: most days of the year, the Schwabenquellen are entered „textilfrei“ which means without swim wear

SI Centrum

The SI Erlebnis Centrum is an entertainment package that offers fun for everyone in all weather conditions. In addition to the **two musical theaters** Stage Apollo and Stage Palladium, the Stage Palladium also includes a **cinema complex** with six halls called CinemaxX, a **casino**, the **wellness area** "Schwabenquellen" (approx. 7,000 sqm with opportunities for relaxation and recreation) and a variety of **bars and restaurants**.

Art

Interested in art? Then there is plenty to see in Stuttgart, for example in the Staatsgalerie with permanent and changing exhibitions, or the "Cube" on Schlossplatz.

- [staatsgalerie.de/en](#)

- [kunstmuseum-stuttgart.de/en](#)

There are many small galleries in and around Stuttgart, too. Check for the "Lange Nacht der Museen", many will open their doors.

Automobiles

If you love cars, and want to learn more about Mercedes and Porsche, you're coming to the right place!

[mercedes-benz.com/en/classic/museum/](#)

[porsche.com/germany/aboutporsche/porschemuseum/](#)

Württemberg State Museum

The largest museum of cultural history in Baden-Württemberg offers a tour of Württemberg's cultural history from the Ice Age to the end of the monarchy in the 19th century in its Legendäre Meister Werke display collection. The True Treasures display collection includes exhibition units on antiquity, the Celts and the chamber of art and curiosities of the Württemberg dukes. Special exhibitions on historical and current topics are held at regular intervals.

[landesmuseum-stuttgart.de/en/visit/visitor-information](#)

State Museum of Natural History

A palaeontological exhibition awaits you in the Museum am Löwentor: in addition to the Steinheim skull, one of the oldest fossil human finds in Central Europe, countless original fossils and lifelike replicas await you in the internationally important fossil collection. In addition to the Museum am Löwentor, Rosenstein Park is also home to the second exhibition building of the State Museum of Natural History. Why not walk over to Rosenstein Castle, where you can learn more about today's animal world and the major ecosystems of our planet.

[naturkundemuseum-bw.de/en/](#)

Planetarium

The program on space exploration changes quarterly. Around 20 to 25 events take place each week, around half of which are suitable for children. In addition to the astronomical topics, there are some special events, such as live music, "Tuesdays", or interactive events where visitors can control the contents of the dome with their smartphone.

[planetarium-stuttgart.de/site/Stuttgart-Planetarium/node/11933363/index.html](#)

Wilhelma

Young and old alike are amazed by the zoological garden with its animals, plants and historic buildings. Today's Wilhelma is part of the historical heritage of the state of Baden-Württemberg.

[wilhelma.de](#)

Fairs and exhibitions

- You will find many different themes and exhibitors at the Neue Messe, right next to the airport: [messe-stuttgart.de/en/](#).
- Fancy fairground rides, German beer and terrible German music to sing along to? These are a must-go then!
- [stuttgarter-fruehlingsfest.de/en/home/](#)
- [cannstatter-volksfest.de/en/landing-page/](#)

2. AROUND STUTT GART



Esslingen

A beautiful city not far away is Esslingen. In addition to modern shopping locations, there are also romantic streets and pretty half-timbered houses in the stunning old town. Above the city, surrounded by vineyards, you will find a castle offering a beautiful overview over the city. It is also home to Kessler Sekt, a delicious brand of sparkling wine. You can have a guided tour through their cellars. Last but not least: Esslingen is famous for its Medieval Christmas market.

Metzingen

Metzingen is truly a place worth visiting if you are interested in fashion and brands. It is also called Outlets City Metzingen because many famous brands such as Hugo Boss, Armani, Adidas, Nike, Puma or Michael Kors have outlet stores there where you can find real bargains.



Ludwigsburg

In Ludwigsburg you will find the largest baroque palace complex in Germany which attracts hundreds of thousands visitors every year. You can also visit the Lustschloss or the Monrepos Palace not far away from Ludwigsburg. The scent of flowers and fairytale magic await you in the extensive gardens of Blühendes Barock, the oldest and most beautiful garden show in Germany. In the Märchengarten, the fairy tale garden, you will also find many German fairy tales installations with historical puppets – quite a harbinger of modern amusement parks, even though a bit scary.



Tübingen

Tübingen is a very beautiful university town - perfect for a day trip – with a beautiful historic old town, breathtaking buildings and a history of about 900 years. You can have a visit to the Stiftskirche which contains grave offerings of important personalities of the old Württemberg, or take a walk to Hohentübingen Castle and enjoy a great over view over the city and surrounding areas. Grab some gelato and go on a Stocherkahn for some Venetian feeling.



Find further inspiration and information in our podcast!

TIPS FOR YOUR STUDIES



1) Use the orientation offers for first semester students
www.uni-hohenheim.de/en/your-start-in-hohenheim

2) Know how your study program works
www.uni-hohenheim.de/en/examination

3) Design your studies
Use the options in your profile studies and set priorities for internships and additional qualifications.
www.uni-hohenheim.de/en/career-orientation-profile-building

4) Use offers by the university
Make use of offers on campus to build soft and professional skills.
weiterbildung.uni-hohenheim.de/#!public

5) Look for support while studying
Sometimes it is helpful to organize in study groups: What you don't know, maybe another person can easily explain.

7) Use the "UniNow" app to stay up-to-date with
what is going on campus, to read mails and news in ILIAS and HohCampus, and to check what lunch Mensa is offering today.

OVERVIEW INSTAGRAM & WHATSAPP GROUPS



GET CONNECTED AND STAY INFORMED

University

@news4internationals_hohenheim
@careercenter_unihohenheim
@humboldtreload_unihohenheim
@innogreenhouse_hohenheim

@unisport_hohenheim
@chor.unihohenheim
@sinfonieorchester
@concert_band_
@unimusik_theater_uni_hohenheim

Studierendenwerk
@my_stuwe

Faculties
@fs_agrar_hohenheim
@fswisohohenheim
@fsnatur_hohenheim

Students

@vs_hohenheim
@hohenheim.nightline
@kulturgruppe_hohenheim
@iso.hohenheim
@aknunihoehenheim
@beehivebioeconomyhoehenheim
@greeninghoehenheim
@fresh_hohenheim
@cafete_unihohenheim
@hoehenheimer_queers

WhatsApp group
"Welcome to Hohenheim":
chat.whatsapp.com/JAakzCi5hacDOUiOWk2e1E

Activities in Stuttgart
@stuttgart.meine.stadt
@stuttgarttourismus
@kesselgeschichten
@stuttgart.places
@stuttgartpride

Imprint

Publisher

University of Hohenheim

Germany – 70593 Stuttgart

Editor

Mirjam Becher

Office of International Affairs
2020

Alessa Heisler

Office of International Affairs
2021, 2022, 2023, 2024

Laura Siegle

Office of International Affairs
2020

Pauline Heisler

Office of International Affairs
2022, 2023, 2024

Design

unger+ kreative strategien GmbH
www.ungerplus.de

Visit our social media channels



Bildnachweise

Titel, S. 2: ©Universität Hohenheim/Max Kovalenko
S. 3: ©Universität Hohenheim/Wolfram Scheible
©Universität Hohenheim/Jan Potente
©Bildarchiv Foto Marburg/Achim Bunz
©Deutscher Akademischer Austauschdienst
DAAD/Focke Strangmann
S. 4, 18: ©Universität Hohenheim/Max Kovalenko
S. 5: ©News4Internationals
S. 9, 10, 14: ©Universität Hohenheim/Henning Koepke
S. 10: ©AdobeStock/Asier
S. 12: ©AdobeStock/Matthew C
S. 17, 30: ©Universität Hohenheim/Boris Lehner
S. 20: ©Universität Hohenheim/Agron Beqiri
©AdobeStock/Wayhome Studio

S. 22: ©sven cichowicz
S. 25: ©AdobeStock/JonoErasmus
S. 26: ©Universität Hohenheim/Agron Beqiri
©AdobeStock/kegfire
S. 28: ©Max Kovalenko
S. 31: ©Universität Hohenheim/N. Shaw
S. 33: ©AdobeStock/ELIJA
S. 35: ©AdobeStock/Photographie.eu
S. 37: ©Universität Hohenheim/Wolfram Scheible
S. 38: ©AdobeStock/Jacob Lund
©AdobeStock/Love You Stock
S. 42: ©AdobeStock/aboutmomensimages
S. 43, 44: ©Oskar EYB
S. 46: ©Universität Hohenheim/Jan Potente
©AdobeStock/kite_rin

S. 49: ©AdobeStock/Stadtblick Stuttgart
S. 53: ©AdobeStock/FollowTheFlow
S. 54: ©AdobeStock/contrastwerkstatt
S. 55: ©AdobeStock/Studio32
S. 56: ©AdobeStock/Eugenio Marongiu
S. 57: ©AdobeStock/Jacob Lund
S. 58: ©Universität Hohenheim/Maximilian Pircher
©AdobeStock/mimagephotos
S. 60: ©AdobeStock/Stadtblick Stuttgart
S. 61: ©AdobeStock/Comofoto
©AdobeStock/Manuel Schörfeld
©AdobeStock/Falko Göthel
S. 64: ©Sergey Novikov (sernovik)
S. 65: ©AdobeStock/Fineart Panorama
©AdobeStock/@mojolo